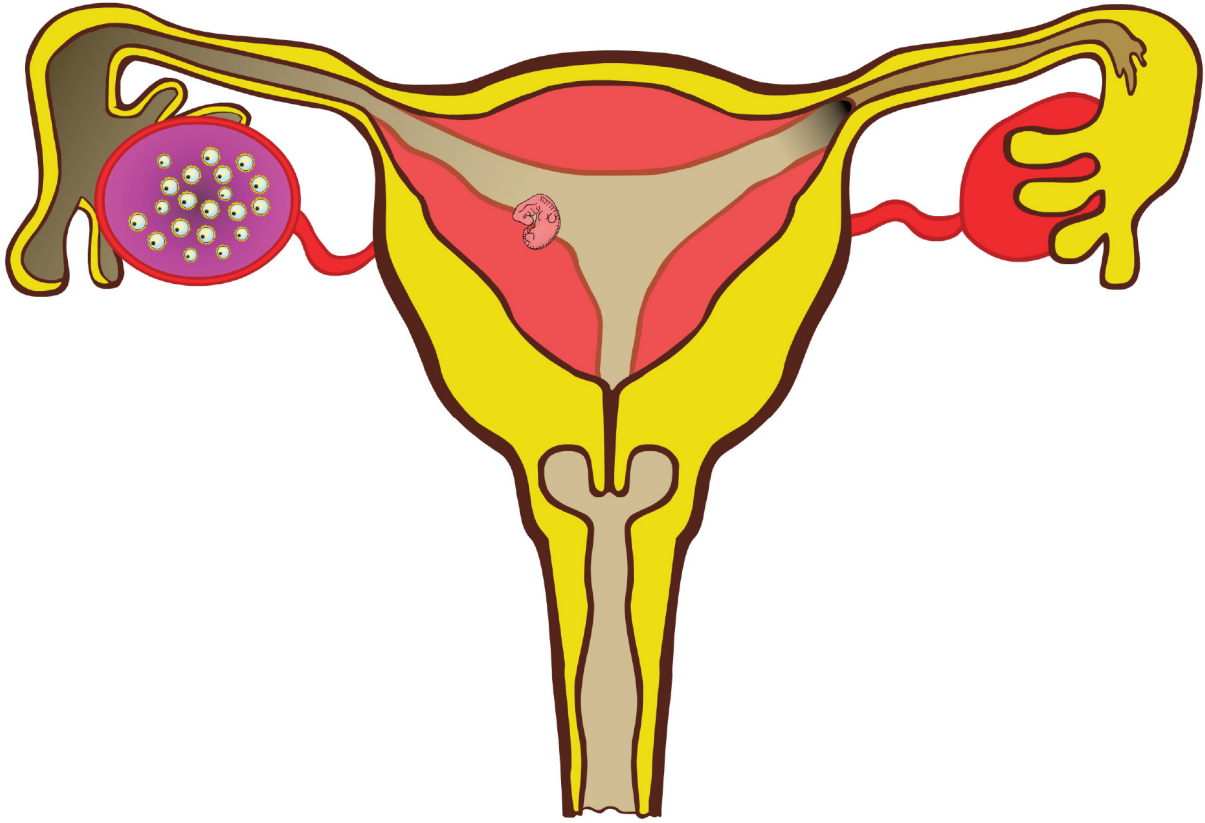
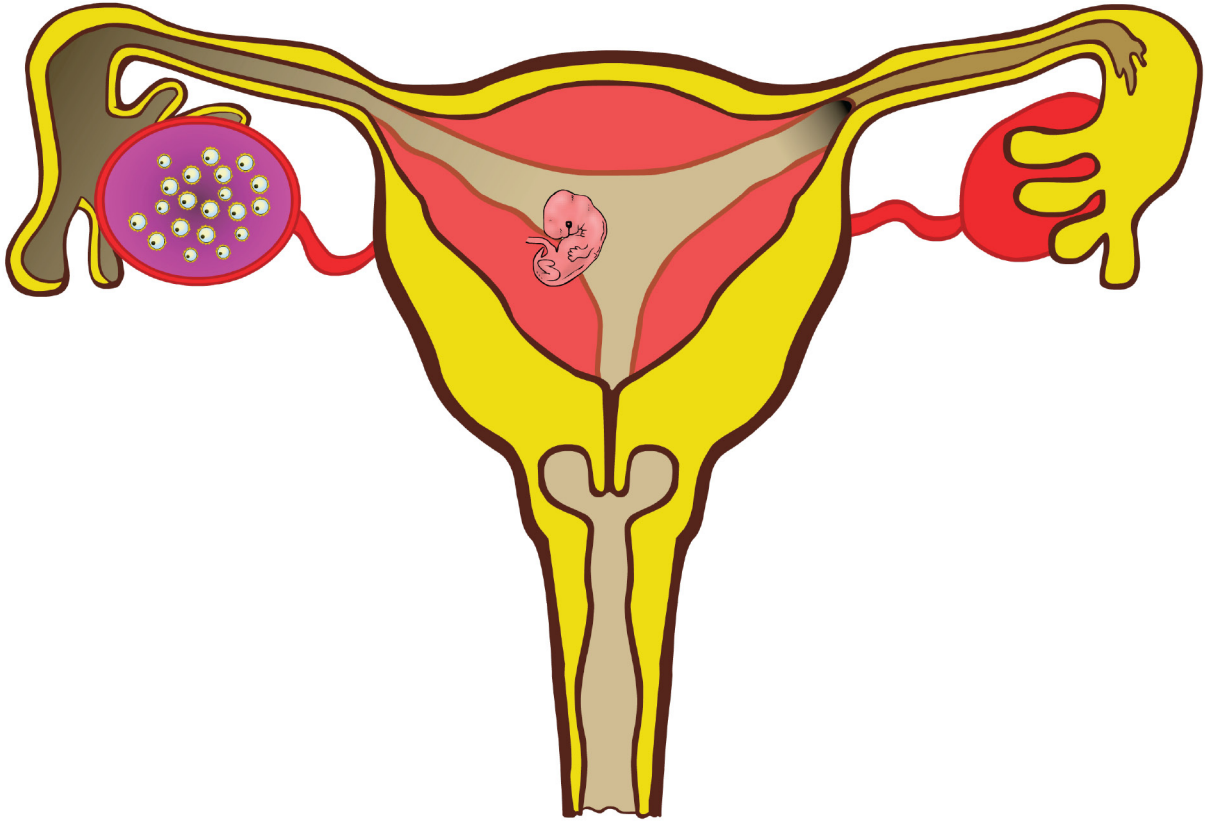


1 month / 4 weeks



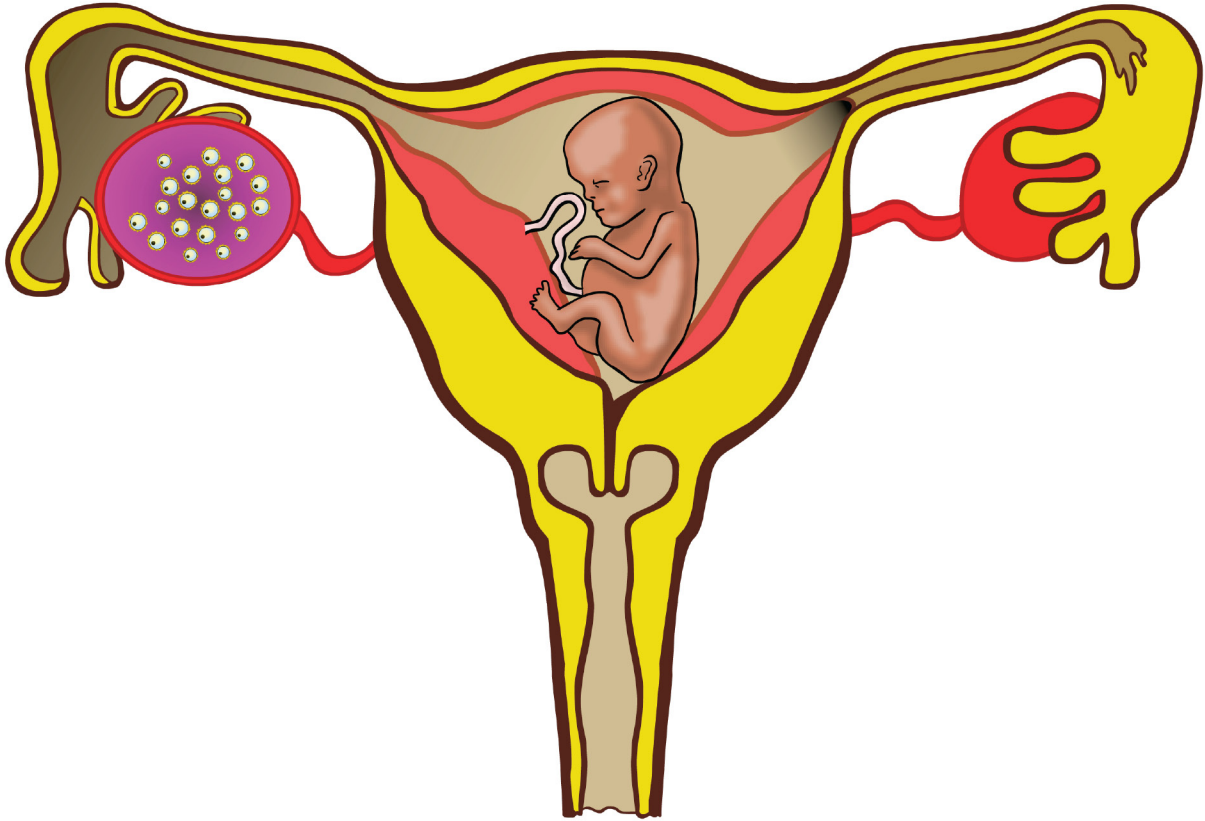
- All details about how the baby will look have been decided - baby's sex, hair colour, eye colour, how tall it will grow and whom it will look like.
- By the time it reaches the uterus, it has become a mass of over 100 cells called an embryo.
- When the embryo is 1 month old the heart has started to form.
- The embryo is about the same size as a grain of rice.
- The mother may not know that she is pregnant by this time, as she has not yet missed a period.

2 months / 8 weeks



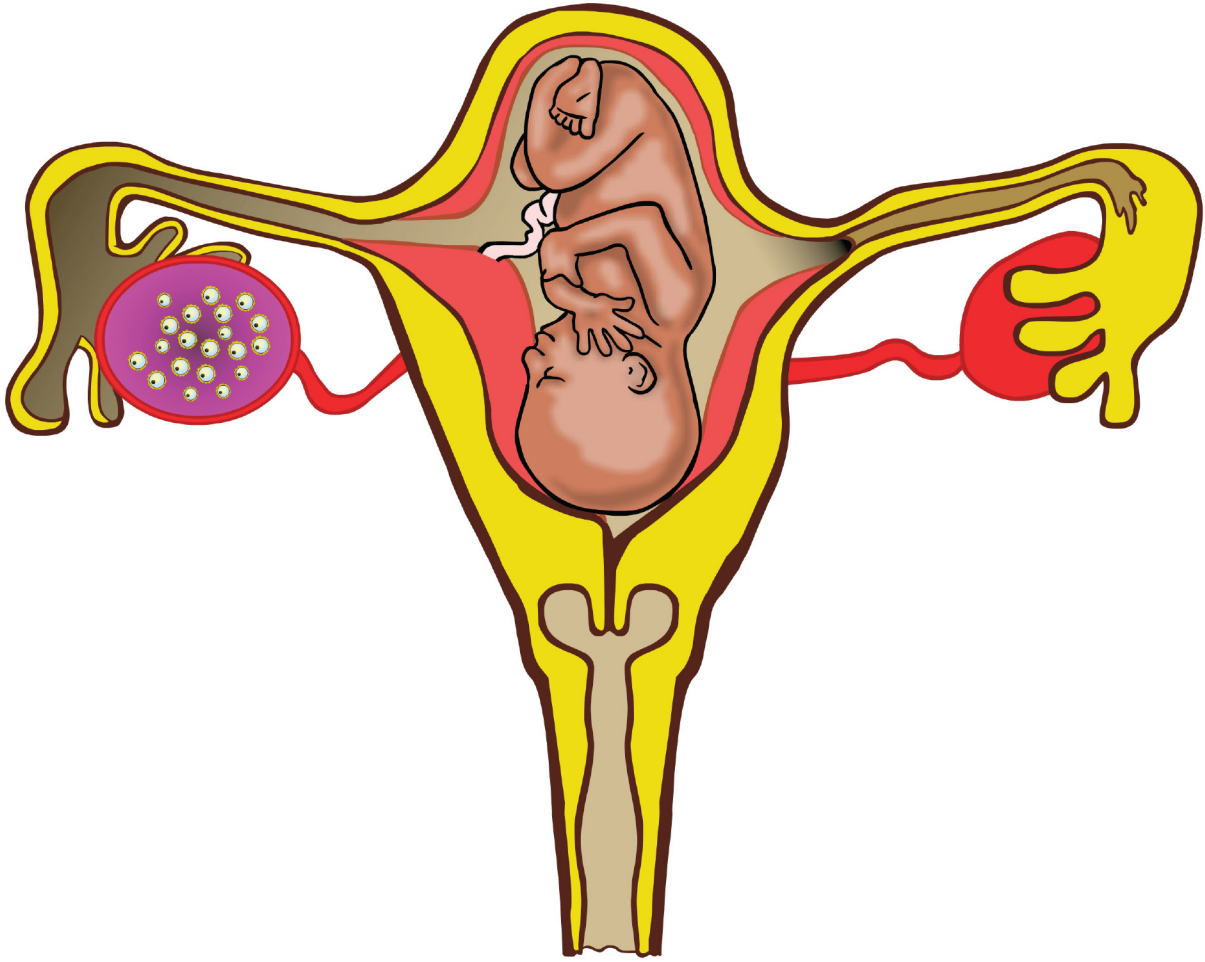
- The major internal organs are all developing – the brain, lungs, heart, intestines, liver and kidneys.
- The face has started to form - eyes, mouth and tongue. The head is growing at a much faster rate than the rest of the body.
- The legs, arms, hands, fingers, feet and toes are developing.
- The backbone starts to grow.
- The baby has grown to about 3cm in length and is about the same size as your big toe.

3 months / 12 weeks



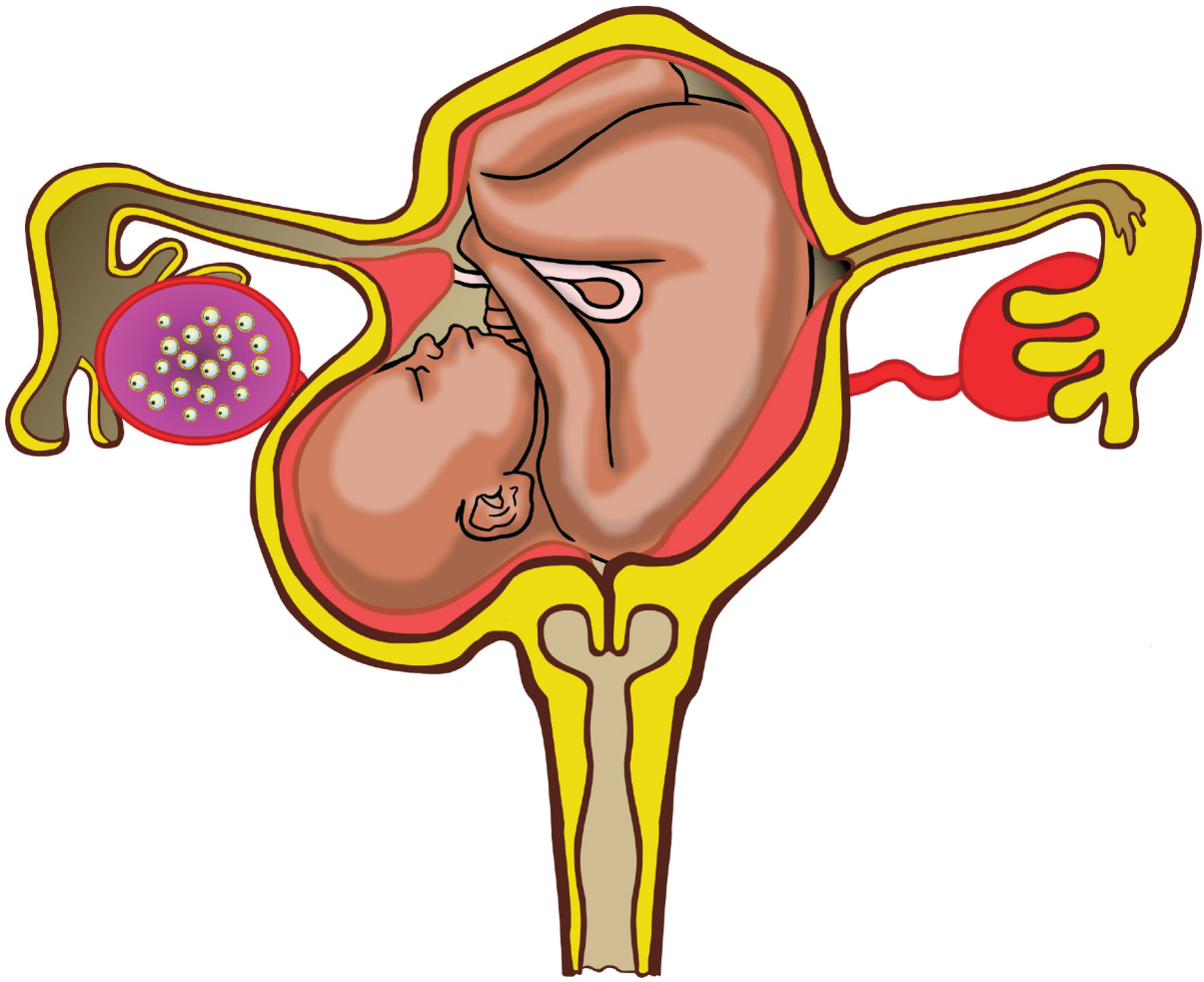
- The baby has fully formed.
- All the organs have developed as well as muscles, ears, lips, bones and the sex organs but there is still a lot of development left.
- The eyelashes have started to develop.
- The baby can now move its arms and legs.
- The heart beats strongly and quickly.
- The mother's tummy has grown because the baby is growing bigger.
- The baby measures approximately 6cm in length, the same size as an adult's thumb.
- The mother goes to see the doctor or the midwife to make sure that the baby is growing properly and is healthy.

6 months / 24 weeks



- The hair starts growing.
- It looks more like a baby.
- The baby can hear voices and music and it can sense light and darkness.
- The mother often feels the baby moving and kicking.
- The mother's tummy has grown bigger because the baby has grown.
- The baby's heartbeat can now be heard through a stethoscope.
- The baby has grown to approximately 15 - 20cm in length.

9 months / 40 weeks



- The baby moves less now because there isn't a lot of room inside the mother's tummy.
- The baby's head usually faces downwards in preparation for the birth.
- The baby starts to get hiccups as it prepares to start breathing.
- The baby's teeth start to grow underneath its gums.
- The baby has grown to about 50cm in length and is fully grown.